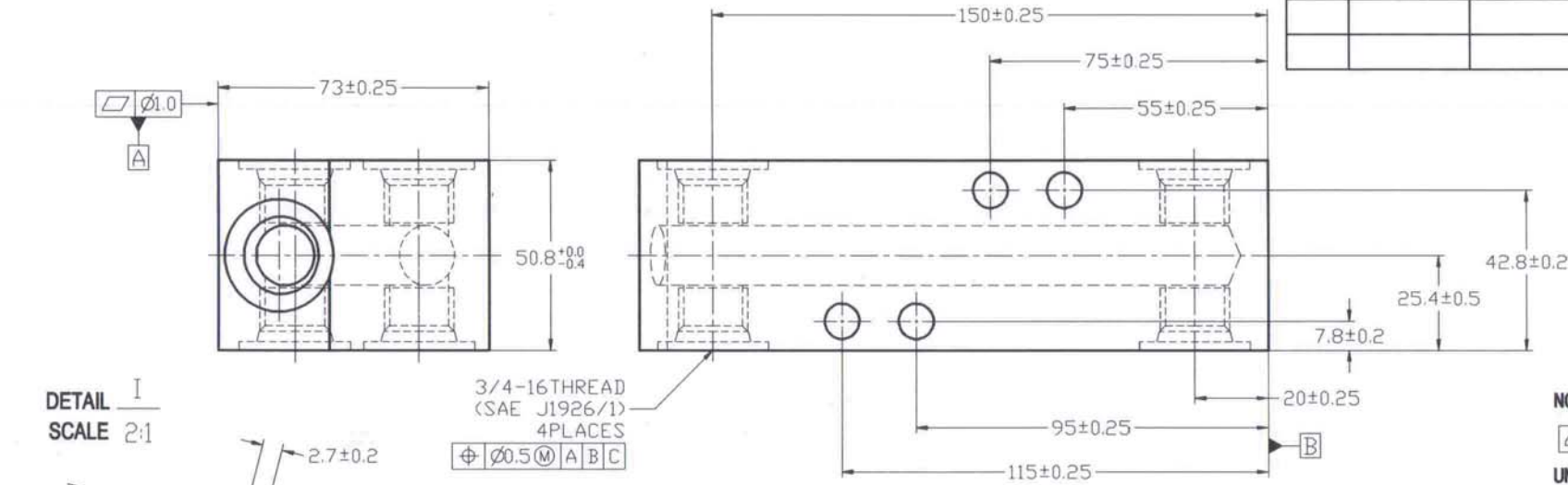
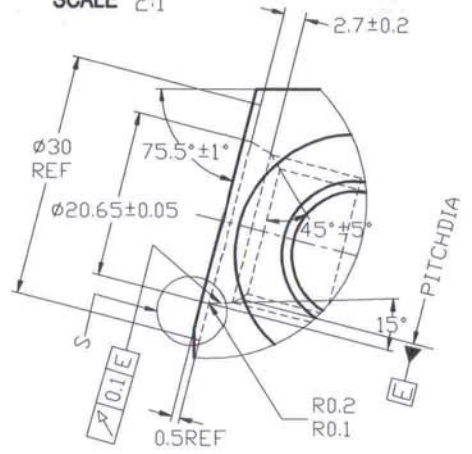


REV 更改号	DATE 日期	REVISION DETAILS 更改内容	APPD 审核并批准



DETAIL I
SCALE 2:1



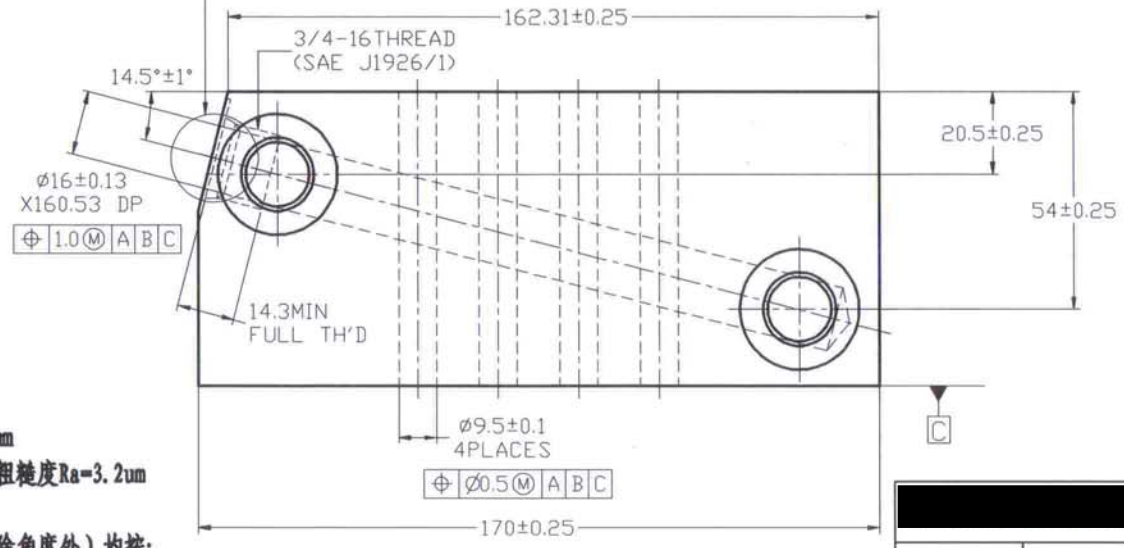
3/4-16 THREAD
(SAE J1926/1)
4 PLACES
Φ 0.5 (M) A B C

NOTE (注):



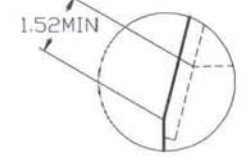
UNLESS OTHERWISE SPECIFIED

DETAIL I



Φ 16±0.13
X160.53 DP
Φ 1.0 (M) A B C

DETAIL S
SCALE 2:1



UNLESS SPECIFIED
ALL DIMENSIONS IN mm
MACHINED SURFACES Ra=3.2um
ANGLE TOLERANCES ±1°
Other tolerance except angles,
in accordance with
GB/T1804-2000(ISO2768-1)-m
and GB/T1184-1996(ISO2768-2)-m

其它事项,
图示尺寸单位为mm
未注机加工表面粗糙度Ra=3.2um
角度公差±1°
其它未注公差(除角度外)均按:
GB/T1804-2000(ISO2768-1)-m和
GB/T1184-1996(ISO2768-2)-m



PART No 零件名	40647 MANIFOLD
----------------	----------------

MATERIAL	Chinese steel 20	APPD: 批准 Zhangjian	DRN: 制图 TangHaiLing 2015.11.16
FINISH	Remove all sharp edges,burrs,silvers and swarf, break all edges 0.127-0.254mm. 去除所有毛刺, 铁屑等残留物, 锐边倒钝0.127-0.254mm. ZINC PLATING WITH 12um MICRONS MINIMUM PLATING THICKNESS AND TRIVALENT CHROMATE PASSIVATION AND WITHSTAND 96 HRS TO WHITE / 144 HS TO RED RUST IN SALT SPRAY TEST. 镀锌, 三价铬钝化, 银白色, 盐雾试验96小时无白斑, 144小时无红锈, 镀锌层厚度大于12um.	SCALE: NTS	DATE: 日期 26/11/15 CHK: 审核 LIJunBiao 2015.11.16